



Yuba City Basin Storm Water Resource Plan Adoption



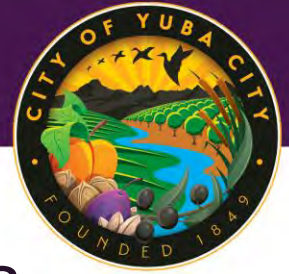
Benjamin K. Moody
Deputy Public Works Director – Engineering

SWRP – Background



- Storm Water Resource Plan (SWRP)
- Required by Senate Bill 985 (2014) to be eligible for future state bond funds for storm-water projects
- No regulatory component to SWRP
- SWRP creates a methodology for evaluating projects and produces a list of projects that qualify for future funding

SWRP – Background (cont.)



- SWRP funded through Proposition 1 funds
- 50% match required
 - A majority of the City's match came from leveraging the Yuba City Basin Drainage Study

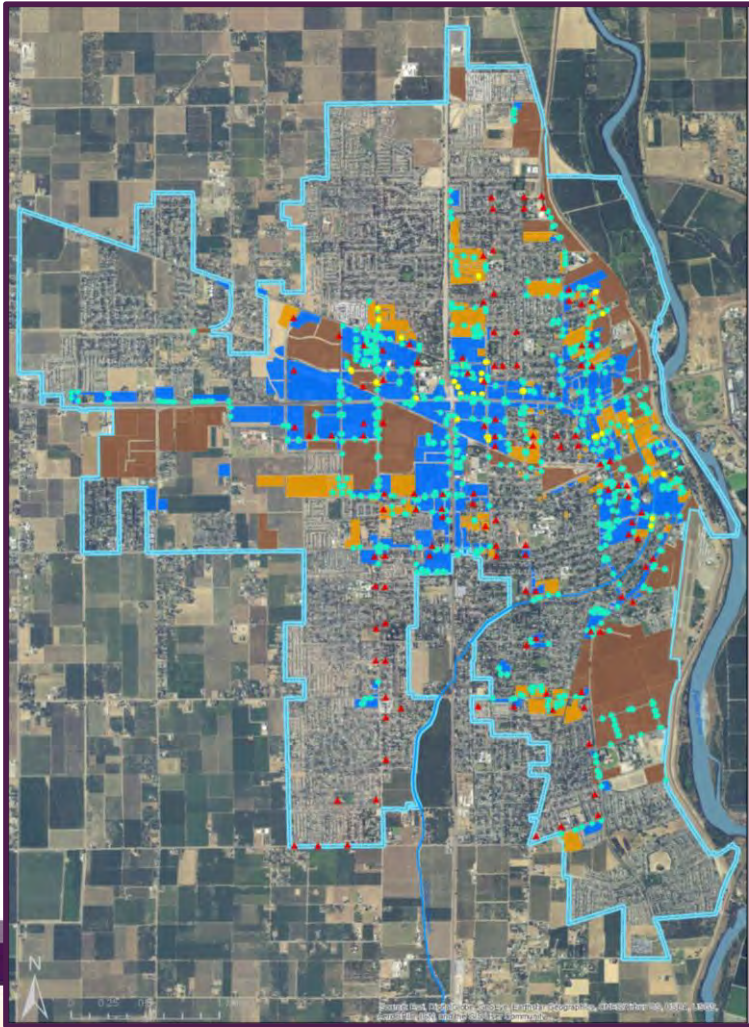
SWRP – Purpose and Goals



Identify and prioritize multi-benefit projects to capture and manage storm water runoff.

State Identified Benefits	Prioritization Weight
Water Quality	8.0
Water Supply	8.1
Flood Management	9.4
Environment	4.0
Community	5.4

SWRP – Trash Capture



- State Water Resource Control Board approved trash amendments to all cities' storm-water permits in April 2015
- Trash amendments require capture of all trash larger than 5 mm (cigarette butt) in priority-land uses
- Little-to-no funding available for trash capture projects other than Proposition 1 funds, which require a SWRP
- Trash capture required by 2025



SWRP – Project Selection



Initial Projects
Screening

10 SWRP Projects
*Evaluate Using State's
Benefit Categories*

Prioritize 10
Projects

Project Grant
Funding

Evaluation/Ranking Criteria:

- Affordability
- Feasibility
- Meets Regulatory Requirements
- Uses Public Land
- Addresses Trash Capture Requirement



Gilsizer North Detention Basin – Corporation Yard

- Reroute flow to facilitate groundwater recharge
- Install trash capture screens
- Install baseball field
- Estimated Cost: \$611,100
- O&M: \$12,400/year





Detention Basin East of WWTF

- Reroute flow to facilitate groundwater recharge
- Install trash capture screens
- Install rip-rap to prevent erosion
- Estimated Cost: \$30,800
- O&M: \$4,000/year





Shanghai Bend Detention Basin

- Reroute flow to facilitate groundwater recharge
- Install trash capture screens
- Install soccer field
- Estimated Cost: \$480,500
- O&M: \$12,400/year





Gilsizer Slough at Lincoln Road

- Install trash capture screen on 84" storm drain outlet
- Install gate for maintenance access
- Estimated Cost: \$359,600
- O&M: \$6,000/year





Madrone and Orchard/Park Trash Capture

- Install trash capture screen
- Replace existing debris rack
- Estimated Cost: \$184,200
- O&M: \$6,000/year



Recommendation

- Adopt a Resolution authorizing the adoption and acceptance of the Yuba City Basin Storm Water Resource Plan.

