

July 17, 2018



Wastewater Treatment Facility Outfall Diffuser

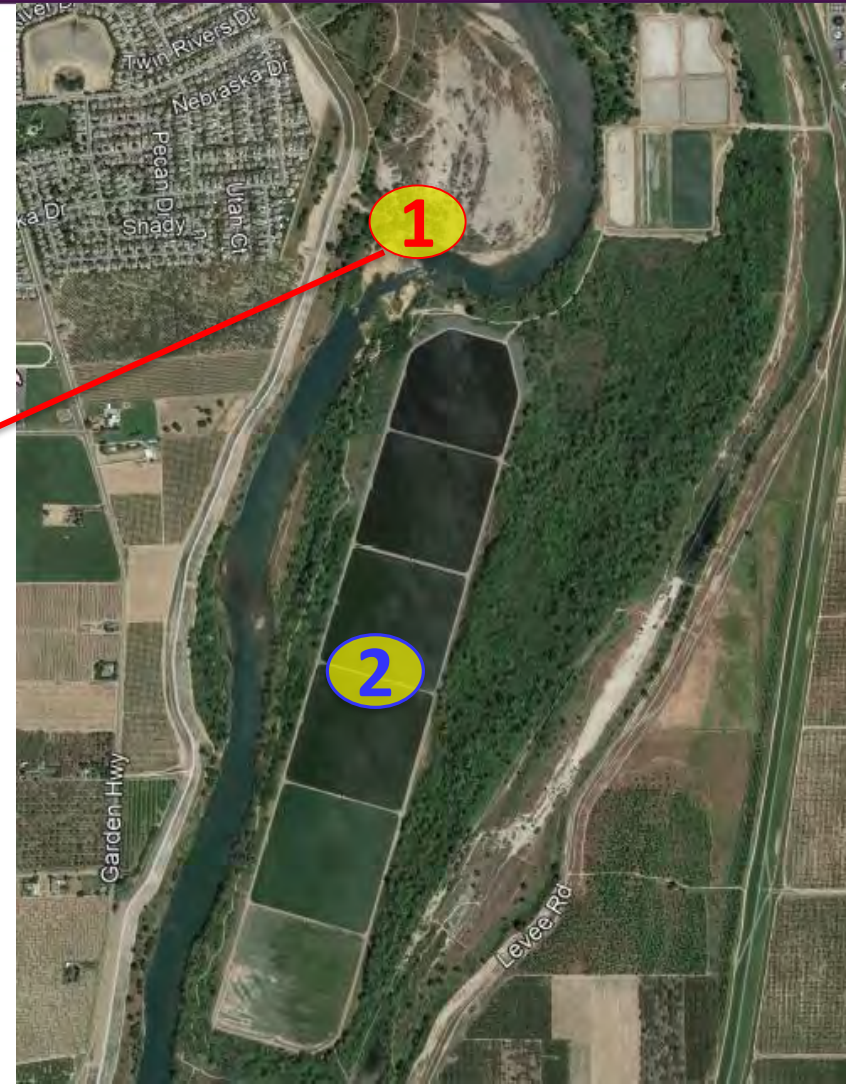
Mandeep S. Chohan
Senior Engineer

WWTF Outfall Diffuser



Two Options for Effluent Discharge

1. Existing Diffuser
2. Ponds



WWTF Outfall Diffuser



Before Shanghai Falls Collapse

After Shanghai Falls Collapse



WWTF Outfall Diffuser



- Before 2011 – Diffuser available year-round
- After 2011 – Diffuser is exposed at less than 6,000 cfs
- 2017/18 – Diffuser is available at approximately 10,000 cfs
- 2017 – Lake Oroville incident flows made the river channel/chute wider
- At normal river flows – only option is ponds
 - Ponds are limited in capacity and need regular maintenance
 - Ponds are vulnerable to damage during river flood events
- CRWQCB asked the City to relocate the Diffuser to a reliable location to enable year-round discharge

WWTF Outfall Diffuser



- RFP for professional services to 8 engineering firms
- Received 3 proposals
- Proposals were reviewed and two firms invited for interview
- Review committee made a unanimous recommendation for **CH2M Hill Engineers/Jacobs** team
 - Highly-experienced proposed team
 - Availability of proposed staff
 - River-modeling capabilities
 - Completion of similar projects

WWTF Outfall Diffuser



- Upon selection of CH2M Hill as the most qualified consultant:
 - Proposed scope of work was reviewed and discussed with the CH2M Hill team
 - “High Risk Project” which requires significant studies before the start of design work
 - Changing river conditions because of 2017 Lake Oroville incident played a major role for this additional scope of work
 - Additional scope was identified in an attempt to mitigate risks for construction and operation of Diffuser

WWTF Outfall Diffuser



Anticipated Project Schedule

- Complete Design: Summer 2020
- Advertise for Bids Fall 2020
- Award Contract: Fall 2020
- Start of Construction: Spring 2021
- Completion: Summer/Fall 2022

WWTF Outfall Diffuser



- **Fiscal Impact**

- Wastewater CIP Fund

- \$2,983,430 including \$200,000 Contingency

WWTF Outfall Diffuser– Recommendations



- A. Award a Professional Services Agreement to CH2M Hill Engineers Inc. of Sacramento, CA in the amount of \$2,783,430 plus \$200,000 contingency to provide professional services necessary for the Wastewater Treatment Facility Effluent Outfall Diffuser Relocation Project in the Feather River, including design, environmental, permitting, right-of-way acquisition, and services during bid period, with the finding that it is in the best interest of the City. Authorize the Public Works Director to adjust the scope of services as necessary within the authorized amount.

WWTF Outfall Diffuser– Recommendations



- B. Authorize the Finance Director to make a budget transfer from unallocated Wastewater CIP Reserve (Fund 528) in the amount of \$1,400,000 to the Wastewater CIP Account No. 981156-65502 (New Outfall and River Levee Crossing Replacement).