



Homeless Workshop



Scott Chandler, Deputy Public Works Director - Maintenance
March 29, 2022



Negative effects of Homelessness on City departments and staff

The safety and well being of staff is the highest priority. Employee hazards include:

Human waste with an increased risk of becoming ill from waterborne diseases.
Bodily injury including sprains, strains, and back injuries.

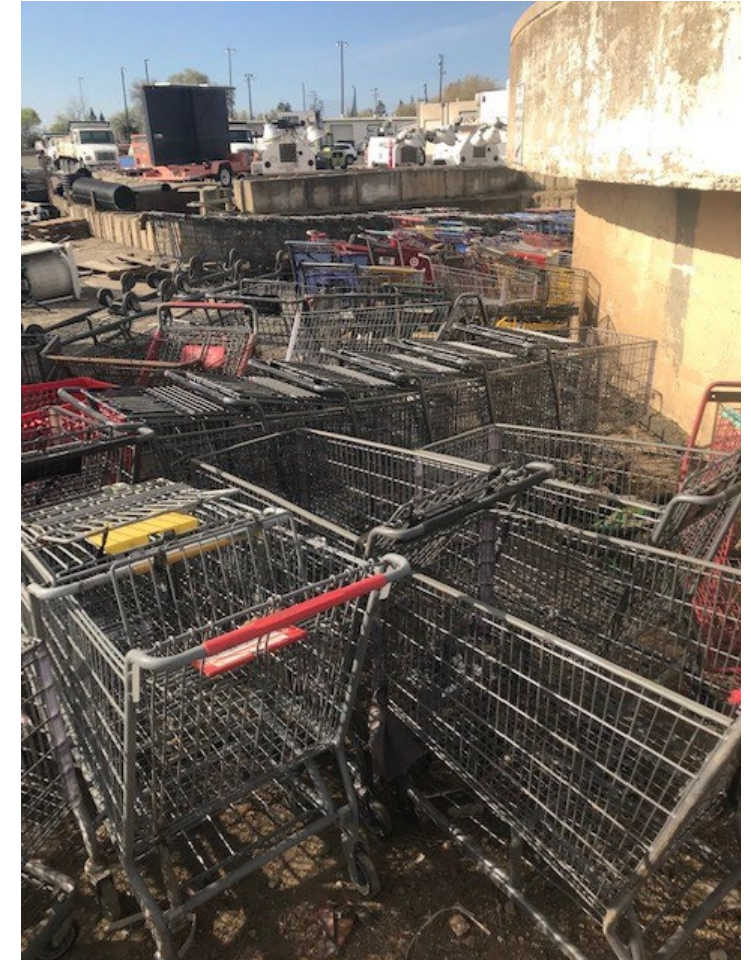
Exposure to blood borne viruses including HIV and Hepatitis C.
Current concerns powdered fentanyl.



Negative effects continued

Continuous retrieval of shopping carts and other household items including:

- Couches
- Mattresses
- Portable commodes



Negative effects continued



- Inconvenient when scheduled work gets put off due to assisting with encampment clean-ups.
- Staff feels that the community views them in a negative light.
- Staff hears typical stereotypes.

Negative effects continued

- Property owners get upset when scheduled work takes longer than expected.
- As an example, this resident was unable to utilize sidewalk, front door access, and a section of their driveway.



Negative effects continued

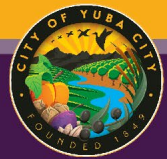
- Training of new employees has been hindered.
- Difficult for new hires to gain experience providing City services such as paving, concrete work, crack-sealing, etc.



[This Photo](#) by Unknown Author is licensed under [CC BY-SA](#)

Negative effects continued

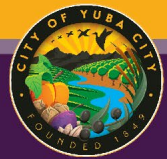




Additional Costs

Streets and Electrical Divisions

- Estimated Streets costs - \$98,800 annually (wages, vehicles, etc.)
- Special projects (Yuba County Ponds) will make the yearly average higher in some years. For example, \$20,000 per week that we spent in Yuba County because more equipment and manpower was needed.
- Estimated Electrical costs \$20,000 annually (wages, vehicles, etc.)



Suggestions Moving Forward

There is no “one size fits all” solution to homelessness.

Staff suggestions include:

- Hire a full-time, two (2) person “beautification crew” that could assist our Code Enforcement Officer and Homeless Liaison Officer to proactively remove blight as seen.
- Schedule regular Citywide Clean-up efforts, with participation from several divisions/departments.



Suggestions Moving Forward continued

- Hire an additional Homeless Liaison Officer to assist in moving transients along before they become established “dig in”.
- Look for more programs (State/Federal) such as the conservation crews that the Code Enforcement Officer has been working with.