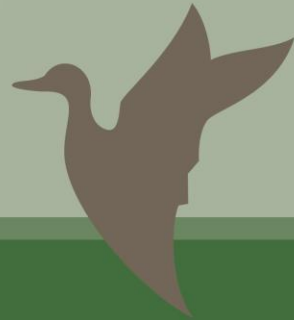




Central City Specific Plan Land Use Changes

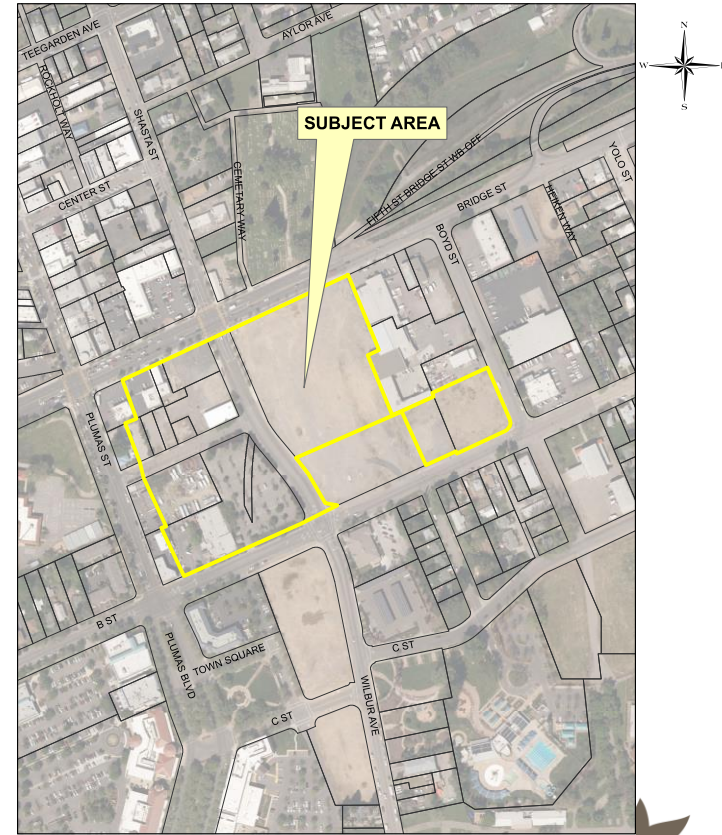
May 19th, 2020



Benjamin Moody
Development Services Director

Location

- 11.37 acres generally located on both sides of Shasta Street between Bridge Street and Shasta Street.
- The excluded 1.5 acres on B Street was previously amended to Community Commercial – C2 Zoning for a proposed hotel in 2018.



General Plan Amendment 19-04,
Specific Plan Amendment 19-02,
Rezone 19-04

Rezone 19-04

Amends the zoning from Heavy Commercial/Light Industrial (C-M) and Community Commercial (C-2) to Community Commercial/Specific Plan (C-2 SP) and Commercial-Office/Specific Plan (C-O SP).

